



**India Meteorological Department
(Ministry of Earth Sciences)**

NATIONAL BULLETIN NO. 30 (ARB/03/2023)

TIME OF ISSUE: 1200 HOURS IST

DATED: 24.10.2023

FROM: INDIA METEOROLOGICAL DEPARTMENT (FAX NO. 24643965/24699216/24623220)

TO: CONTROL ROOM, NDM, MINISTRY OF HOME AFFAIRS (FAX.NO. 23093750)

CONTROL ROOM NDMA (FAX.NO. 26701729)

CABINET SECRETARIAT (FAX.NO.23012284, 23018638)

PS TO HON'BLE MINISTER FOR S & T AND EARTH SCIENCES (FAX NO.23316745)

SECRETARY, MOES (FAX NO. 24629777)

H.Q. (INTEGRATED DEFENCE STAFF AND CDS) (FAX NO. 23005137/23005147)

DIRECTOR GENERAL, DOORDARSHAN (23385843)

DIRECTOR GENERAL, AIR (23421105, 23421219)

PIB MOES (FAX NO. 23389042)

UNI (FAX NO. 23355841)

D.G. NATIONAL DISASTER RESPONSE FORCE (NDRF) (FAX NO. 26105912, 2436 3260)

DIRECTOR, PUNCTUALITY, INDIAN RAILWAYS (FAX NO. 23388503)

ADMINISTRATOR, LAKSHADWEEP ISLANDS (FAX NO. 0413-262184)

CHIEF SECRETARY, KERALA (FAX NO. 0471-2327176)

CHIEF SECRETARY, KARNATAKA (FAX NO. 080-22258913)

CHIEF SECRETARY, GOA (FAX NO. 0832-2415201)

CHIEF SECRETARY, MAHARASHTRA (FAX NO. 022- 22028594)

CHIEF SECRETARY, GUJARAT (FAX NO. 079-23250305)

CHIEF SECRETARY, DAMAN & DIU (FAX NO. 0260-2230775)

CHIEF SECRETARY, DADRA & NAGAR HAVELI (FAX NO. 0260-2645466)

CHIEF SECRETARY, ODISHA (FAX NO. 0674-2536660)

CHIEF SECRETARY, WEST BENGAL (FAX NO. 033-22144328)

CHIEF SECRETARY, ANDHRA PRADESH (FAX NO. 0863-2441029, 08645-246600)

CHIEF SECRETARY, TAMIL NADU (FAX NO 044-25672304)

CHIEF SECRETARY, PUDUCHERRY (FAX NO 0413-2334145)

CHIEF SECRETARY, GOVT. OF TRIPURA (FAX NO. 0381-2414013, 2413200)

CHIEF SECRETARY, GOVT. OF MIZORAM (FAX NO. 0389-2322745, 2320588)

CHIEF SECRETARY, GOVT. OF MANIPUR (FAX NO. 0385-2452629)

CHIEF SECRETARY, GOVT. OF NAGALAND (FAX NO. 0370-2270057)

ADMINISTRATOR, ANDAMAN & NICOBAR ISLANDS (FAX NO. 03192- 232656)

Sub: (A) Severe Cyclonic Storm "Tej" (pronounced as Tej) over coastal Yemen and (B) Severe Cyclonic Storm "Hamoon" (pronounced as Hamoon) intensified into a Very Severe Cyclonic Storm over Northwest & Adjoining Northeast Bay of Bengal.

(A) Severe Cyclonic Storm "Tej" (pronounced as Tej) over coastal Yemen

The severe cyclonic storm "TEJ" (Pronounced as Tej) over coastal Yemen moved west-northwestward with a speed of 7 kmph during past 6 hours and lay centered at 0830 hours IST of today, the 24th October, over the same region, near latitude 16.0°N and longitude 51.8°E, about 30 km west-southwest of Al Ghaidah (Yemen) and 270 km west-southwest of Salalah (Oman).

It is very likely to move further west-northwestwards and weaken into a cyclonic storm during next 3 hours and into a Depression during subsequent 06 hours.

Forecast track and intensity are given below:

Date/Time(IST)	Position (Lat. °N/ long. °E)	Maximum sustained surface wind speed (Kmph)	Category of cyclonic disturbance
24.10.23/0830	16.0/51.8	90-100 gusting to 110	Severe Cyclonic Storm
24.10.23/1130	16.1/51.5	70-80 gusting to 90	Cyclonic Storm
24.10.23/1730	16.2/51.2	30-40 gusting to 50	Depression

Warnings:

(i) Wind warning (warning graphics enclosed):

• **Westcentral Arabian Sea:**

Gale wind speed reaching **90-100 kmph gusting to 110 kmph** is prevailing and likely to decrease rapidly becoming **70-80 kmph gusting to 90 kmph** from noon of 24th October and decrease gradually becoming squally wind speed reaching **30-40 gusting to 50 kmph** from evening of 24th October.

(ii) Sea Condition

• **Westcentral Arabian Sea:**

Very high sea condition is currently prevailing and would become high from 24th October noon and very rough to rough for subsequent 06 hours.

(iii) Fishermen Warning (Graphics attached):

Fishermen are advised not to venture into **Westcentral Arabian Sea** till night of 24th October.

(B) Severe Cyclonic Storm “Hphoon” (pronounced as Hphoon) intensified into a Very Severe Cyclonic Storm over Northwest adjoining Northeast Bay of Bengal

The Severe Cyclonic Storm “Hphoon” (pronounced as Hphoon) over Northwest Bay of Bengal moved east-northeastwards with a speed of 23 kmph during past 6 hours, intensified into a Very Severe Cyclonic Storm and lay centered at 0830 hours IST of 24th October over Northwest and adjoining Northeast Bay of Bengal, near latitude 20.0°N and longitude 89.5°E, about 290 km east of Paradip (Odisha), 270 km southeast of Digha (West Bengal), 230 km south-southwest of Khepupara (Bangladesh) and 350 km southwest of Chittagong (Bangladesh).

It is very likely to maintain its intensity of Very Severe Cyclonic Storm for a few hours. Thereafter, it is likely to weaken gradually while moving northeastwards and cross Bangladesh coast between Khepupara and Chittagong around evening of 25th October as a **cyclonic storm with wind speed of 65 to 75 kmph gusting to 85 kmph**.

Forecast track and intensity are given below:

Date/Time (IST)	Position (Lat. °N/ long. °E)	Maximum sustained surface wind speed (Kmph)	Category of cyclonic disturbance
24.10.23/0830	20.0/89.5	115-125 gusting to 135	Very Severe Cyclonic Storm
24.10.23/1130	20.3/89.8	120-130 gusting to 140	Very Severe Cyclonic Storm
24.10.23/1730	20.6/90.1	105-115 gusting to 125	Severe Cyclonic Storm
24.10.23/2330	21.1/90.5	100-110 gusting to 120	Severe Cyclonic Storm
25.10.23/0530	21.6/90.9	80-90 gusting to 100	Cyclonic Storm
25.10.23/1730	22.3/91.4	65-75 gusting to 85	Cyclonic Storm
26.10.23/0530	23.5/92.1	40-50 gusting to 60	Depression

Warnings:

(i) Rainfall Warning:

Manipur, Mizoram & Tripura and south Assam & Meghalaya: Light to moderate rainfall is very likely at most places with isolated heavy rainfall over Mizoram and Tripura on 24th and 25th and over south Assam on 24th October. Light to moderate rainfall is likely at many places over Mizoram and Tripura on 26th October.

Light to moderate rainfall is very likely at many places over Nagaland and Manipur during 24-26th October and east Arunachal Pradesh on 25th & 26th October.

(ii) Wind warning (warning graphics enclosed):

• **Northeast Bay of Bengal:**

Gale wind speed reaching **115-125 kmph gusting to 135 kmph** is prevailing. It is likely to become **120-130 kmph gusting 140 kmph** during next 6 hours. It would decrease gradually thereafter becoming **Gale wind** speed reaching **100-110 kmph gusting to 120 kmph** by 24th midnight, and **65-75 kmph gusting to 85 kmph** by 25th evening and would decrease thereafter.

• **Northwest Bay of Bengal:**

Gale wind speed reaching **115-125 kmph gusting to 135 kmph** is prevailing. It is likely to become **120-130 kmph gusting 140 kmph** during next 6 hours. It would decrease gradually thereafter becoming **Gale wind** speed reaching **80-90 kmph gusting to 100 kmph** by 24th midnight, and **Squally wind** speed reaching **50-60 kmph gusting to 70 kmph** by 25th evening and would decrease thereafter.

• **Adjoining Westcentral Bay of Bengal:** **Squally wind** speed reaching **50-60 kmph gusting to 70 kmph** is prevailing and would gradually decrease becoming **30-40 kmph gusting to 50 kmph** from 24th evening.

• **Adjoining eastcentral Bay of Bengal:** **Squally wind** speed reaching **50-60 kmph gusting to 70 kmph** is prevailing and would gradually decrease becoming **40-50 kmph gusting to 60 kmph** from 24th evening.

• **Along & off Odisha, West Bengal, Bangladesh and north Myanmar coasts:**

Squally wind speed reaching **40-50 kmph gusting to 60 kmph** is likely prevailing along & off Odisha coast on 24th. **Squally wind** speed reaching **40-50 kmph gusting to 60 kmph** is prevailing along & off West Bengal, Bangladesh and North Myanmar coasts from 24th morning. It would gradually increase becoming **65-75 kmph gusting to 85 kmph** along & off Bangladesh coast, **55-65 kmph gusting to 75 kmph** along & off north Myanmar coast and **45-55 kmph gusting to 65 kmph** along & off west Bengal coast on 25th October.

• **Mizoram, Tripura, south Assam and Manipur:**

Squally wind speed reaching **40-50 kmph gusting to 60 kmph** is likely to prevail over Mizoram and Tripura and **Strong wind** speed reaching **30-40 kmph gusting to 50 kmph** over south Assam & Manipur on 25th October.

(iii) Sea Condition

• **Northeast Bay of Bengal:**

Phenomenal sea conditions are prevailing and likely to continue till 24th evening and would become very high to high thereafter till 25th evening and very rough to rough till 26th October morning.

• **Northwest Bay of Bengal:**

Phenomenal sea conditions are prevailing and likely to continue till 24th evening and would become very high to high thereafter till 25th morning and then very rough to rough by 25th October evening.

- **Adjoining westcentral Bay of Bengal: Very rough to rough** till 24th October evening. It is likely to improve gradually thereafter.
- **Adjoining eastcentral Bay of Bengal: Very rough to rough** till 24th October evening. It is likely to improve gradually thereafter.
- **Along & off Odisha, West Bengal, Bangladesh and north Myanmar coasts: Rough to very rough sea conditions** on 24th and 25th October.

(iv) Fishermen Warning (Graphics attached):

Fishermen are advised not to venture into

- ❖ **North Bay of Bengal and along & off Odisha, West Bengal, Bangladesh and north Myanmar coasts** during 24th to 25th October.
- ❖ **Adjoining areas of Westcentral** till 24th October evening **and Eastcentral Bay of Bengal** till 25th October morning.

Both the systems are under continuous surveillance and the next bulletin will be issued at 1430 hours IST of 24th October, 2023.

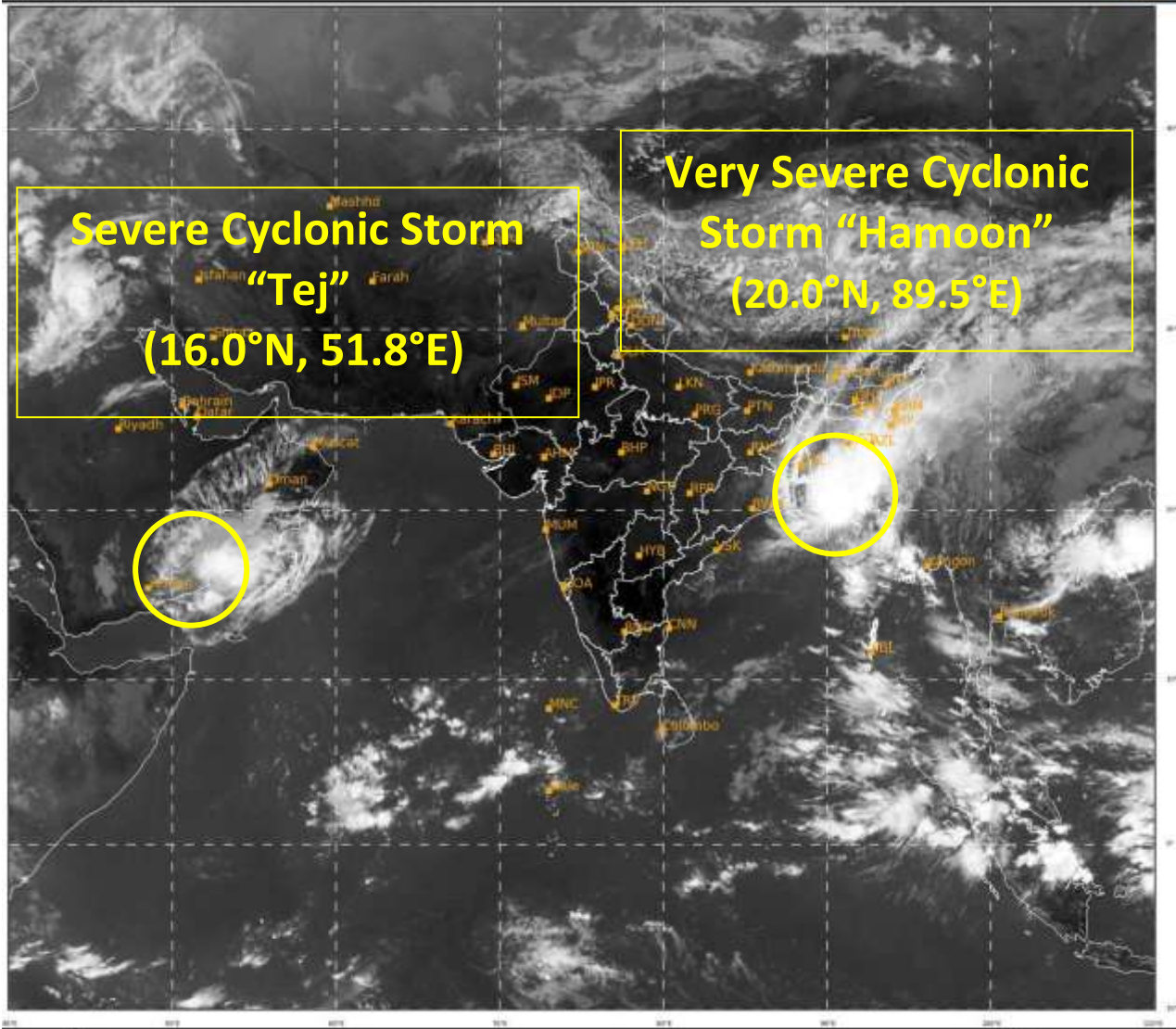
(S. P. Singh)

Scientist C, Cyclone Warning Division, New Delhi

Copy to: ACWC Mumbai/ ACWC Chennai/ ACWC Kolkata/CWC Ahmedabad/CWC Bhubaneswar/CWC Vishakhapatnam/CWC Thiruvananthapuram/MC Goa

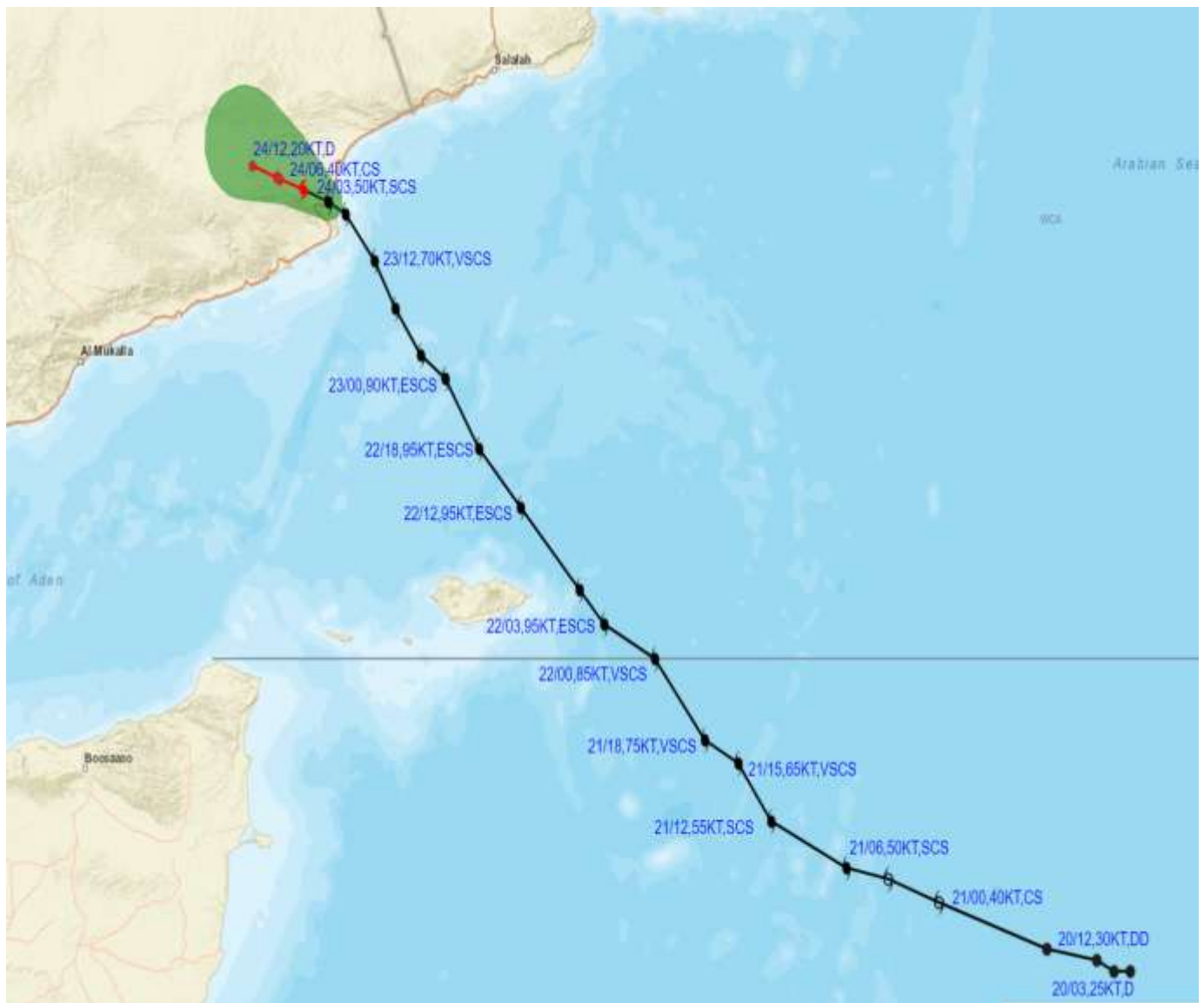
Spatial rainfall distribution: Isolated: <25%, A few: 26-50%, Many: 51-75%, Most: 76-100%

Rainfall amount (mm): Heavy rain: 64.5 – 115.5, Very heavy rain: 115.6 – 204.4, Extremely heavy rain: 204.5 or more.





OBSERVED AND FORECAST TRACK ALONGWITH CONE OF UNCERTAINTY OF SEVERE CYCLONIC STORM “TEJ” OVER COASTAL YEMEN BASED ON 0300 UTC (0830 IST) OF 24TH OCTOBER 2023.

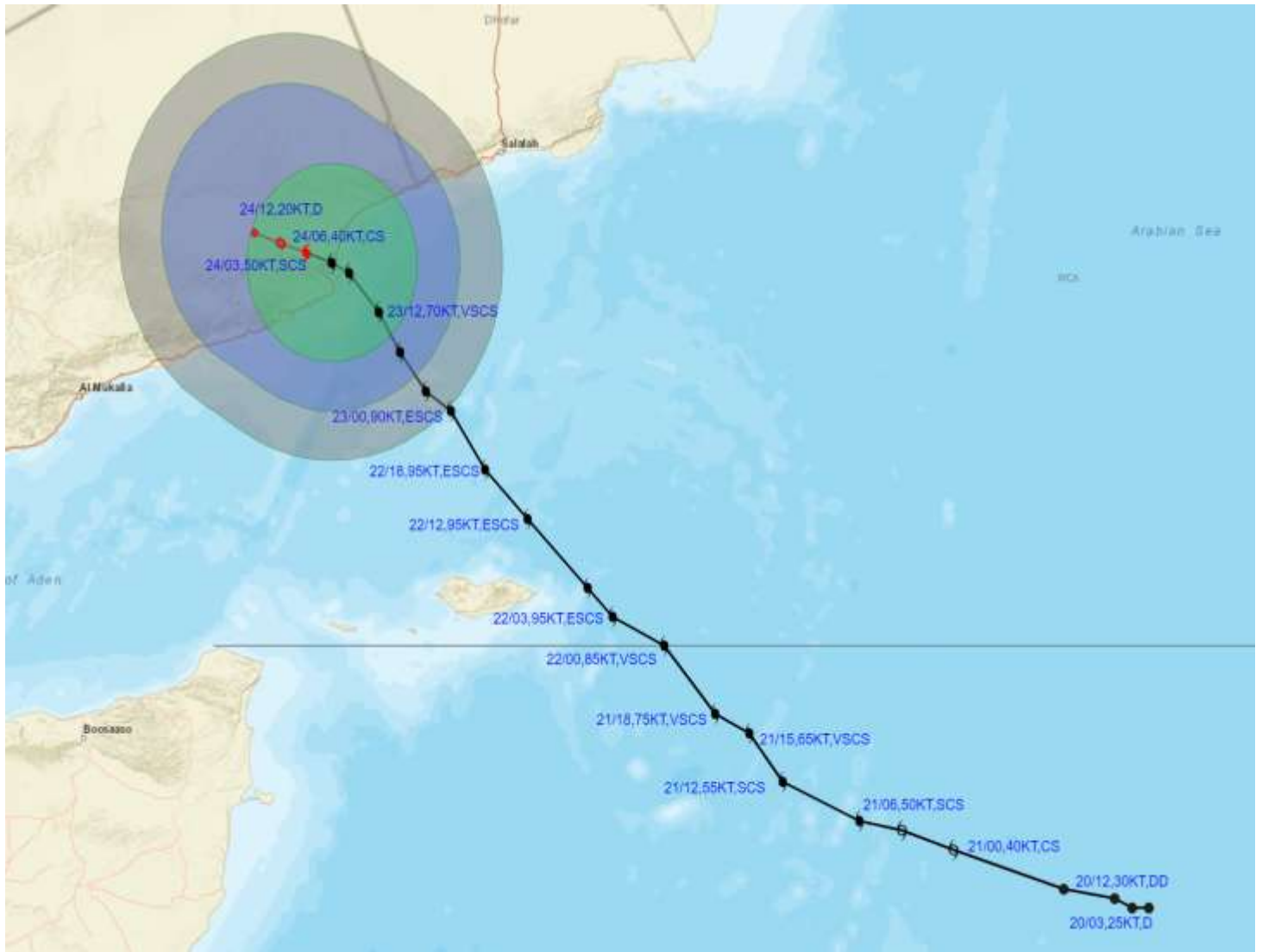


DATE/TIME IN UTC
 IST=UTC + 0530
 L: LOW PRESSURE AREA
 WML: WELL MARKED LOW PRESSURE AREA
 D: DEPRESSION (17-27 KT)
 DD: DEEP DEPRESSION (28-33 KT)
 CS: CYCLONIC STORM (34-47 KT)
 SCS: SEVERE CYCLONIC STORM (48-63KT)
 VSCS: VERY SEVERE CYCLONIC STORM (64-89 KT)
 ESCS: EXTREMELY SEVERE CYCLONIC STORM (90-119 KT)
 SuCS: SUPER CYCLONIC STORM (\geq 120 KT)

- LESS THAN 34 KT
- 34-47 KT
- \geq 48 KT
- OBSERVED TRACK
- FORECAST TRACK
- CONE OF UNCERTAINTY



OBSERVED AND FORECAST TRACK ALONGWITH QUADRANT WIND DISTRIBUTION OF SEVERE CYCLONIC STORM "TEJ" OVER COASTAL YEMEN BASED ON 0300 UTC (0830 IST) OF 24TH OCTOBER 2023.



DATE/TIME IN UTC
 IST=UTC + 0530
 L: LOW PRESSURE AREA
 WML: WELL MARKED LOW PRESSURE AREA
 D: DEPRESSION (17-27 KT)
 DD: DEEP DEPRESSION (28-33 KT)
 CS: CYCLONIC STORM (34-47 KT)
 SCS: SEVERE CYCLONIC STORM (48-63KT)
 VSCS: VERY SEVERE CYCLONIC STORM (64-89 KT)
 ESCS: EXTREMELY SEVERE CYCLONIC STORM (90-119 KT)
 SuCS: SUPER CYCLONIC STORM (≥ 120 KT)

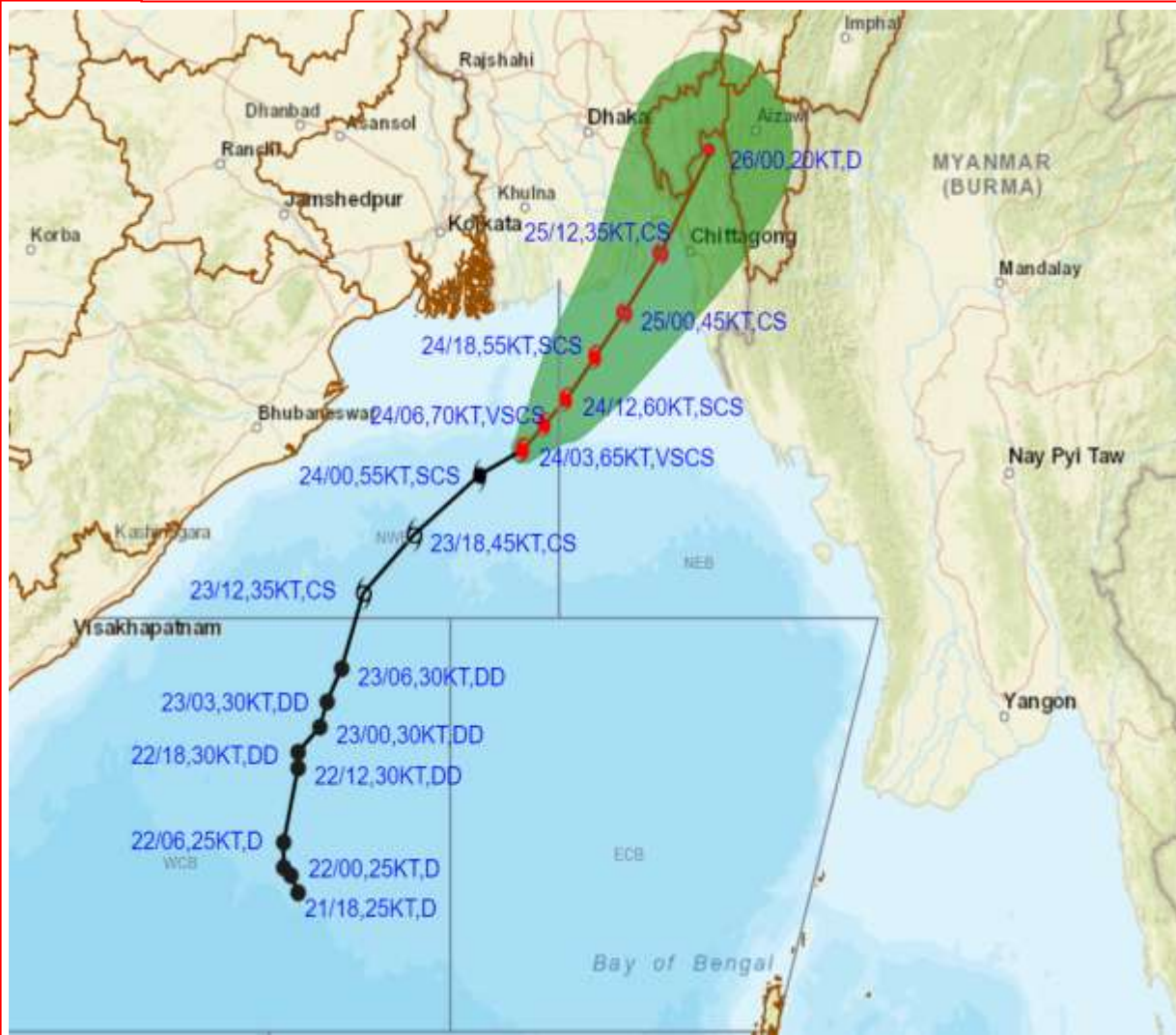
● LESS THAN 34 KT
 ⊙ 34-47 KT
 ⊕ ≥ 48 KT
 — OBSERVED TRACK
 — FORECAST TRACK
 ● CONE OF UNCERTAINTY
 AREA OF MAXIMUM SUSTAINED WIND SPEED:
 ■ 28-33 KT (52-61 KMPH)
 ■ 34-49 KT (62-91 KMPH)
 ■ 50-63 KT (92-117 KMPH)
 ■ ≥ 64 KT (≥118 KMPH)

IMPACT OVER THE SEA

MSW (knot/kmph)	Impact	Action
28-33 (52-61)	Very rough seas	Total suspension of fishing operations
34-49 (62-91)	High to very high seas	Total suspension of fishing operations
50-63 (92-117)	Very high seas	Total suspension of fishing operations
≥ 64 (≥118)	Phenomenal	Total suspension of fishing operations



OBSERVED AND FORECAST TRACK ALONGWITH CONE OF UNCERTAINTY OF VERY SEVERE CYCLONIC STORM "HAMOON" OVER NORTHWEST & ADJOINING NORTHEASTBAY OF BENGAL BASED ON 0300 UTC (0830 IST) OF 24TH OCTOBER 2023.



DATE/TIME IN UTC

IST=UTC + 0530

L: LOW PRESSURE AREA

WML: WELL MARKED LOW PRESSURE AREA

D: DEPRESSION (17-27 KT)

DD: DEEP DEPRESSION (28-33 KT)

CS: CYCLONIC STORM (34-47 KT)

SCS: SEVERE CYCLONIC STORM (48-63KT)

VSCS: VERY SEVERE CYCLONIC STORM (64-89 KT)

ECS: EXTREMELY SEVERE CYCLONIC STORM (90-119 KT)

SuCS: SUPER CYCLONIC STORM (\geq 120 KT)

● LESS THAN 34 KT

○ 34.47 KT

○ \geq 48 KT

— OBSERVED TRACK

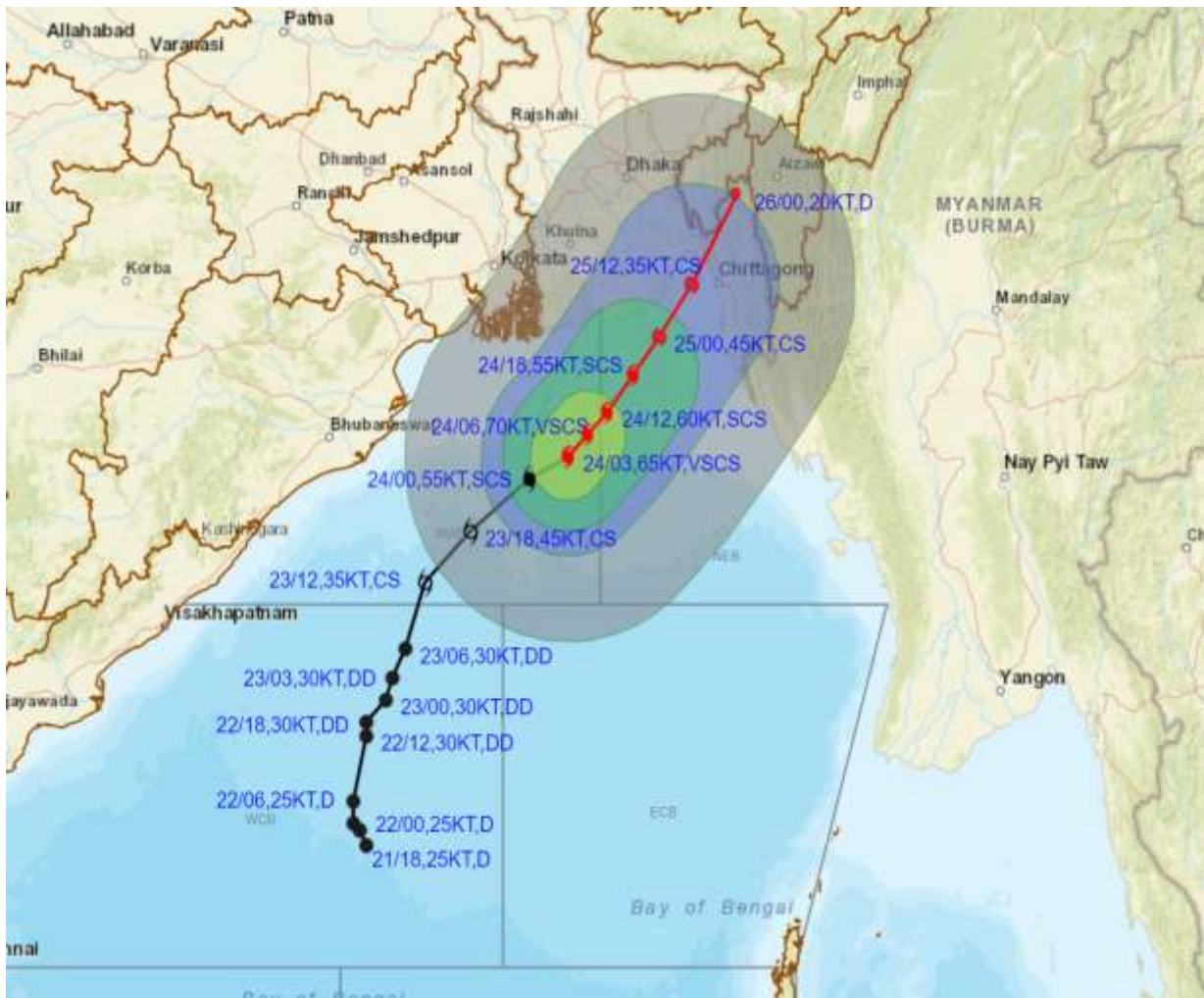
— FORECAST TRACK

▲ CONE OF UNCERTAINTY

Forecast	DISTANCE(KM) AND DIRECTION FROM STATIONS			
Date and Time	PARADIP (CWR)	DIGHA	KHEPUPARA	CHITTAGONG (AMBAGAN)
25.10.23/0000	470, ENE	360, E	90, ESE	120, SW
25.10.23/1200	540, ENE	410, ENE	130, ENE	50, W
26.10.23/0000	660, ENE	520, ENE	260, NE	130, NNE



OBSERVED AND FORECAST TRACK ALONGWITH QUADRANT WIND DISTRIBUTION OF VERY SEVERE CYCLONIC STORM "HAMOON" OVER NORTHWEST & ADJOINING NORTHEASTBAY OF BENGAL BASED ON 0300 UTC (0830 IST) OF 24TH OCTOBER 2023.



DATE/TIME IN UTC
 IST=UTC + 0530
 L: LOW PRESSURE AREA
 WML: WELL MARKED LOW PRESSURE AREA
 D: DEPRESSION (17-27 KT)
 DD: DEEP DEPRESSION (28-33 KT)
 CS: CYCLONIC STORM (34-47 KT)
 SCS: SEVERE CYCLONIC STORM (48-63KT)
 VSCS: VERY SEVERE CYCLONIC STORM (64-89 KT)
 ESCS: EXTREMELY SEVERE CYCLONIC STORM (90-119 KT)
 SuCS: SUPER CYCLONIC STORM (≥20 KT)

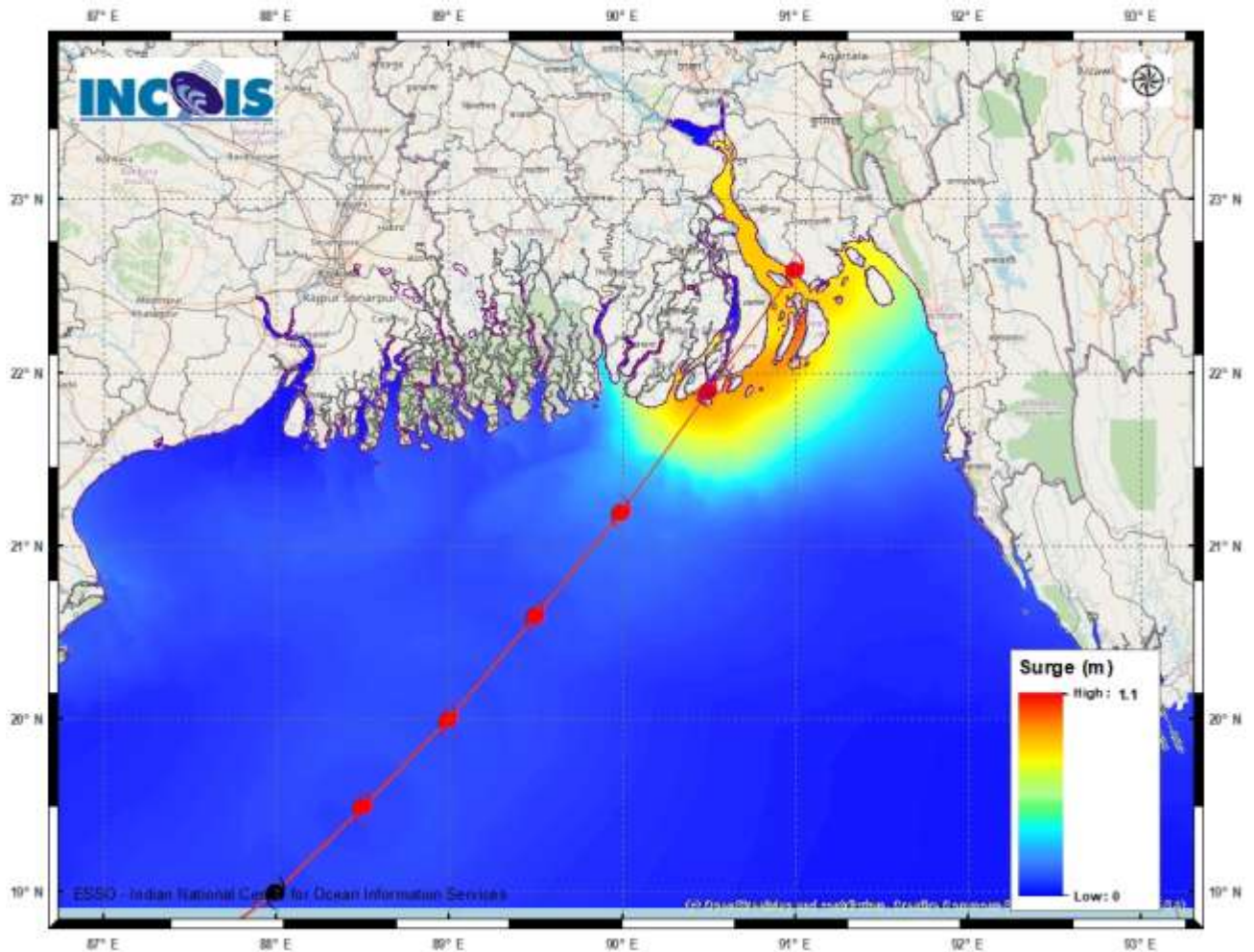
● LESS THAN 34 KT
 ○ 34-47 KT
 ⊙ ≥ 48 KT
 — OBSERVED TRACK
 — FORECAST TRACK
 ▲ CONE OF UNCERTAINTY
 AREA OF MAXIMUM SUSTAINED WIND SPEED:
 ■ 28-33 KT (52-61 KMPH)
 ■ 34-49 KT (62-91 KMPH)
 ■ 50-63 KT (92-117 KMPH)
 ■ ≥ 64 KT (≥118 KMPH)

IMPACT OVER THE SEA

MSW (knot/kmph)	Impact	Action
28-33 (52-61)	Very rough seas	Total suspension of fishing operations
34-49 (62-91)	High to very high seas	Total suspension of fishing operations
50-63 (92-117)	Very high seas	Total suspension of fishing operations
≥ 64 (≥118)	Phenomenal	Total suspension of fishing operations

STORM SURGE GUIDANCE FOR BANGLADESH:

Storm surge of about 1.0-1.5 metre height above the astronomical tide is likely to inundate low lying areas between Khepupara and Chittagong (Bangladesh) around the time of landfall.



Fishermen warning graphics

Day 1: 24.10.2023/05:30AM to 25.10.2023/05:30AM



Day 2: 25.10.2023/05:30AM to 26.10.2023/05:30AM



Day 3: 26.10.2023/05:30AM to 27.10.2023/05:30AM



Day 4: 27.10.2023/05:30AM to 28.10.2023/05:30AM



Squally WX with wind speed 40-45 kmph gusting to 55 kmph

Squally WX with wind speed 45-55 kmph gusting to 65 kmph

Squally wind with speed 50-60 kmph gusting to 70 kmph

CS with Gale wind speed 60-90 kmph gusting to 110 kmph

SCS with Gale wind speed 90-110 kmph gusting to 120 kmph

VSCS with Gale wind speed 110-160 kmph gusting to 175 kmph

ESCS with Gale wind speed 160-220 kmph gusting to 240 kmph

Fishermen are advised not to venture into the marked areas.

WEATHER WARNING GRAPHICS

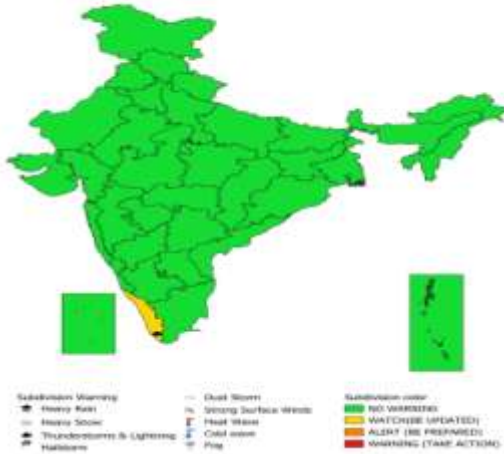
SUBDIVISIONWISE WEATHER WARNING FOR DAY 1
(24-10-2023)



SUBDIVISIONWISE WEATHER WARNING FOR DAY 2
(25-10-2023)



SUBDIVISIONWISE WEATHER WARNING FOR DAY 3
(26-10-2023)



SUBDIVISIONWISE WEATHER WARNING FOR DAY 4
(27-10-2023)



SUBDIVISIONWISE WEATHER WARNING FOR DAY 5
(28-10-2023)



WATCH(BE UPDATED)
 ALERT (BE PREPARED)
 WARNING (TAKE ACTION)